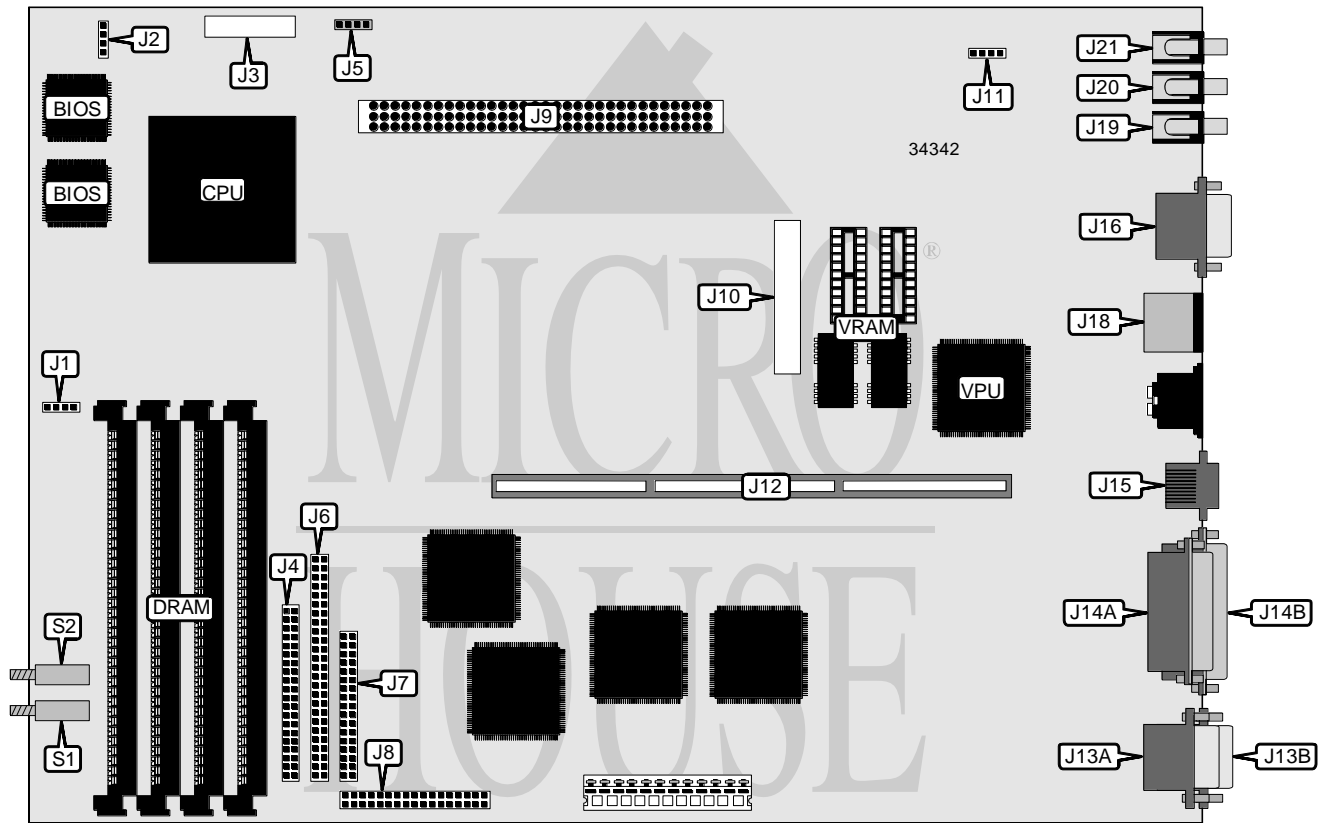


MOTOROLA, INC.

ULTRA 603, ULTRA 604

Processor	Motorola PowerPC 603/PowerPC 603e/PowerPC 604
Processor Speed	Unidentified
NPU Options	N/A
Chipset	Intel/Motorola
Maximum Onboard Memory	Unidentified
Maximum Video Memory	Unidentified
Cache	Unidentified
BIOS	Unidentified
I/O Options	PCI/ISA riser card slot, PDS slot, PS/2 mouse port, floppy drive interface, IDE interface, SCSI interface, parallel port, serial ports (2), VGA port, VESA advanced connector, audio connectors (4), Ethernet via unshielded twisted pair, Ethernet via AUI transceiver via DB-15 port
Dimensions	330 x 228mm
NPU Options	None



Continued on next page . . .

MOTOROLA, INC.
 ULTRA 603, ULTRA 604

... continued from previous page

CONNECTIONS			
Function	Label	Function	Label
Header for Reset and Abort switches	J1	Serial port 2	J13B
Speaker	J2	AUI transceiver via DB-15 port	J14A
RISCwatch connector	J3	Parallel port	J14B
IDE interface	J4	UTP connector	J15
Chassis fan power	J5	VGA port	J16
SCSI-2 Fast interface	J6	Power LED & keylock	J17
Not used	J7	PS/2 mouse interface	J18
Floppy drive interface	J8	Audio jack	J19
PDS slot	J9	Audio jack	J20
VESA advanced connector	J10	Audio jack	J21
Audio connector	J11	Abort switch	S1
PCI/ISA riser card slot	J12	Reset switch	S2
Serial port 1	J13A		
Note: J3, S1 and S2 may not be present on all models.			

DRAM CONFIGURATION
The DRAM configuration is unidentified.

VRAM CONFIGURATION
The VRAM configuration is unidentified.