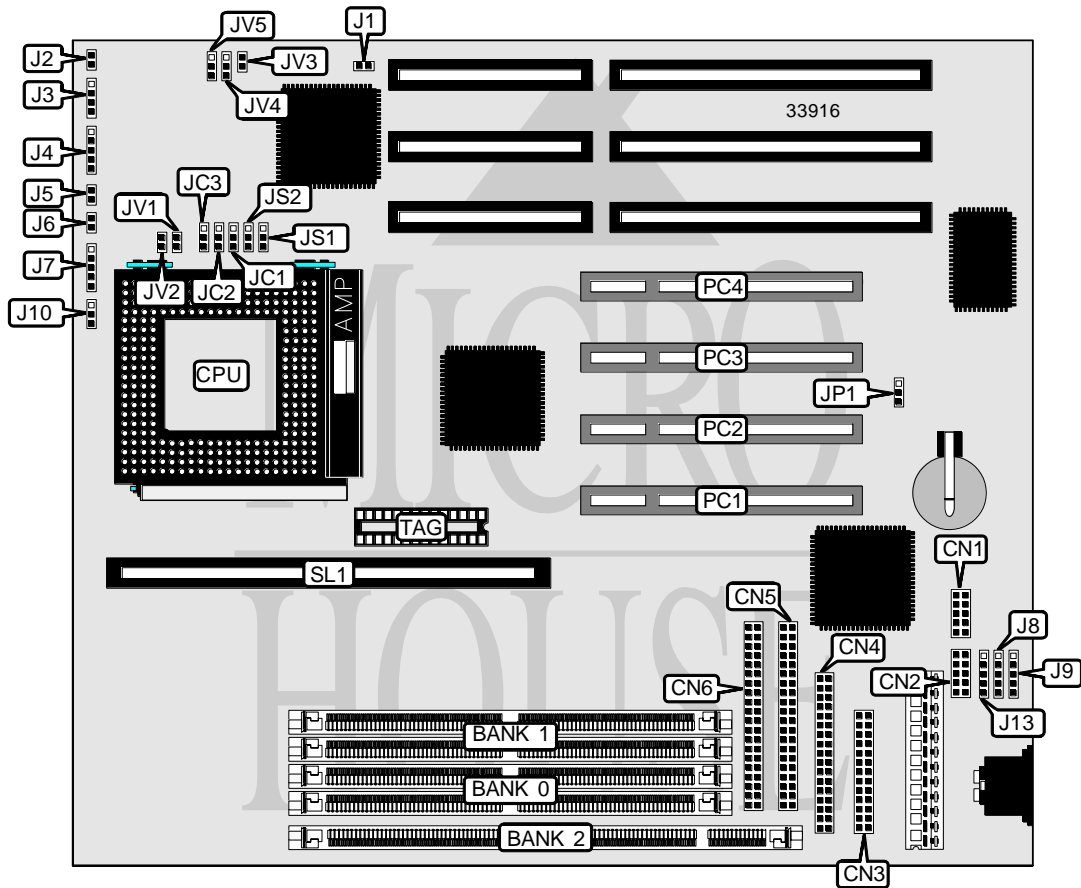


QDI COMPUTER, INC.

P5I430VX-250DM EXPLORER II

Processor	CX M1/AM K5/Pentium
Processor Speed	75/90/100/120/133/150/166/180/200MHz
Chip Set	Intel
Video Chip Set	None
Maximum Onboard Memory	128MB (EDO supported)
Maximum Video Memory	None
Cache	256/512KB
BIOS	Award
Dimensions	250mm x 220mm
I/O Options	32-bit PCI slots (4), floppy drive interface, green PC connector, IDE interfaces (2), parallel port, PS/2 mouse interface, serial ports (2), cache slot, IR connector, USB connectors (2)
NPU Options	None



Continued on next page. . .

QDI COMPUTER, INC.
P5I430VX-250DM EXPLORER II

... continued from previous page

CONNECTIONS			
Purpose	Location	Purpose	Location
Serial port 1	CN1	IDE interface LED	J5
Serial port 2	CN2	Turbo LED	J6
Parallel port	CN3	IR connector	J7
Floppy drive interface	CN4	USB connector 1	J8
IDE interface 2	CN5	USB connector 2	J9
IDE interface 1	CN6	Chassis fan power	J10
Green PC connector	J1	PS/2 mouse interface	J13
Reset switch	J2	32-bit PCI slots	PC1 - PC4
Speaker	J3	Cache slot	SL1
Power LED & keylock	J4		

USER CONFIGURABLE SETTINGS		
Function	Label	Position
í CMOS memory normal operation	JP1	Pins 1 & 2 closed
CMOS memory clear	JP1	Pins 2 & 3 closed

DRAM CONFIGURATION			
Size	Bank 0	Bank 1	Bank 2
8MB	(2) 1M x 36	None	None
8MB	None	None	(1) 1M x 64
16MB	(2) 2M x 36	None	None
16MB	(2) 1M x 36	(2) 1M x 36	None
16MB	None	None	(1) 2M x 64
24MB	(2) 1M x 36	(2) 1M x 36	(1) 1M x 64
24MB	None	(2) 1M x 36	(1) 2M x 64
24MB	(2) 2M x 36	(2) 1M x 36	None
24MB	(2) 1M x 36	(2) 2M x 36	None
32MB	(2) 1M x 36	(2) 2M x 36	(1) 1M x 64
32MB	None	(2) 2M x 36	(1) 2M x 64
32MB	None	None	(1) 4M x 64
32MB	(2) 4M x 36	None	None
32MB	(2) 2M x 36	(2) 2M x 36	None
40MB	(2) 4M x 36	(2) 1M x 36	None
48MB	(2) 4M x 36	(2) 1M x 36	(1) 1M x 64
48MB	(2) 1M x 36	(2) 1M x 36	(1) 4M x 64
48MB	None	(2) 4M x 36	(1) 2M x 64
48MB	(2) 4M x 36	(2) 2M x 36	None
56MB	(2) 4M x 36	(2) 2M x 36	(1) 1M x 64
56MB	(2) 1M x 36	(2) 2M x 36	(1) 4M x 64
64MB	None	None	(1) 8M x 64
64MB	(2) 8M x 36	None	None
64MB	(2) 4M x 36	(2) 4M x 36	None

Continued on next page. ...

QDI COMPUTER, INC.

P5I430VX-250DM EXPLORER II

... continued from previous page

DRAM CONFIGURATION (CON'T)			
Size	Bank 0	Bank 1	Bank 2
72MB	(2) 4M x 36	(2) 4M x 36	(1) 1M x 64
72MB	(2) 4M x 36	(2) 1M x 36	(1) 4M x 64
72MB	None	(2) 1M x 36	(1) 8M x 64
72MB	(2) 8M x 36	(2) 1M x 36	None
80MB	(2) 1M x 36	(2) 8M x 36	(1) 1M x 64
80MB	(2) 4M x 36	(2) 2M x 36	(1) 4M x 64
80MB	None	(2) 8M x 36	(1) 2M x 64
80MB	None	(2) 2M x 36	(1) 8M x 64
80MB	(2) 8M x 36	(2) 2M x 36	None
96MB	(2) 4M x 36	(2) 4M x 36	(1) 4M x 64
96MB	None	(2) 4M x 36	(1) 8M x 64
96MB	(2) 8M x 36	(2) 4M x 36	None
104MB	(2) 4M x 36	(2) 8M x 36	(1) 1M x 64
104MB	(2) 1M x 36	(2) 8M x 36	(1) 4M x 64
128MB	(2) 4M x 36	(2) 8M x 36	(1) 4M x 64
128MB	None	(2) 8M x 36	(1) 8M x 64
128MB	(2) 8M x 36	(2) 8M x 36	None

Note: Board accepts EDO memory.

CACHE CONFIGURATION			
Size	Bank 0	SL1	TAG
256KB	(2) 32K x 32	Not installed	Unidentified
256KB	None	256KB module installed	Unidentified
512KB	(2) 32K x 32	256KB module installed	Unidentified
512KB	None	512KB module installed	Unidentified
512KB	(2) 64K x 32	Not installed	Unidentified

Note: The location of bank 0 is unidentified.

CPU SPEED SELECTION (CYRIX)							
CPU speed	Clock speed	Multiplier	JC1	JC2	JC3	JS1	JS2
120MHz	50MHz	2x	1 & 2	1 & 2	2 & 3	2 & 3	1 & 2
133MHz	55MHz	2x	2 & 3	1 & 2	2 & 3	2 & 3	1 & 2
150MHz	60MHz	2x	1 & 2	2 & 3	2 & 3	2 & 3	1 & 2
166MHz	66MHz	2x	2 & 3	2 & 3	2 & 3	2 & 3	1 & 2

Note: Pins designated should be in the closed position.

Continued on next page. . .

QDI COMPUTER, INC.
P5I430VX-250DM EXPLORER II

... continued from previous page

CPU SPEED SELECTION (AMD)							
CPU speed	Clock speed	Multiplier	JC1	JC2	JC3	JS1	JS2
75MHz	50MHz	1.5x	1 & 2	1 & 2	2 & 3	2 & 3	2 & 3
90MHz	60MHz	1.5x	1 & 2	2 & 3	2 & 3	2 & 3	2 & 3
100MHz	66MHz	1.5x	2 & 3	2 & 3	2 & 3	2 & 3	2 & 3
150MHz	60MHz	2x	1 & 2	2 & 3	2 & 3	2 & 3	1 & 2
166MHz	66MHz	2x	2 & 3	2 & 3	2 & 3	2 & 3	1 & 2

Note: Pins designated should be in the closed position.

CPU SPEED SELECTION (INTEL)							
CPU speed	Clock speed	Multiplier	JC1	JC2	JC3	JS1	JS2
75MHz	50MHz	1.5x	1 & 2	1 & 2	2 & 3	2 & 3	2 & 3
90MHz	60MHz	1.5x	1 & 2	2 & 3	2 & 3	2 & 3	2 & 3
100MHz	66MHz	1.5x	2 & 3	2 & 3	2 & 3	2 & 3	2 & 3
120MHz	60MHz	2x	1 & 2	2 & 3	2 & 3	2 & 3	1 & 2
133MHz	66MHz	2x	2 & 3	2 & 3	2 & 3	2 & 3	1 & 2
150MHz	60MHz	2.5x	1 & 2	2 & 3	2 & 3	1 & 2	1 & 2
166MHz	66MHz	2.5x	2 & 3	2 & 3	2 & 3	1 & 2	1 & 2
180MHz	60MHz	3x	1 & 2	2 & 3	2 & 3	1 & 2	2 & 3
200MHz	66MHz	3x	2 & 3	2 & 3	2 & 3	1 & 2	2 & 3

Note: Pins designated should be in the closed position.

CPU VOLTAGE SELECTION (SINGLE)					
Voltage	JV1	JV2	JV3	JV4	JV5
3.3v	Closed	Closed	Open	1 & 2	N/A
3.5v	Closed	Closed	Closed	1 & 2	N/A

Note: Pins designated should be in the closed position.

CPU VOLTAGE SELECTION (DUAL)						
I/O voltage	V core	JV1	JV2	JV3	JV4	JV5
3.3v	2.5	Open	Open	Open	2 & 3	Open
3.3v	2.7	Open	Open	Open	2 & 3	1 & 2
3.3v	2.9	Open	Open	Open	2 & 3	2 & 3
3.5v	2.5	Open	Open	Closed	2 & 3	Open
3.5v	2.7	Open	Open	Closed	2 & 3	1 & 2
3.5v	2.9	Open	Open	Closed	2 & 3	2 & 3

Note: Pins designated should be in the closed position.